

SURGI-TEC



THE ART OF MOVING BONE



WWW.SURGI-TEC.COM

SURGI-TEC

THE ART OF MOVING BONE



Surgi-Tec is an ISO 13485 certified medical device manufacturer based in Belgium. We specialise in CMF surgery implants.

The development of the TPD (transpalatal distractor) and the OBA (ortho bone anchor) have caused a remarkable shift in the field of CMF surgery.

These products are developed in close collaboration with Prof. Dr. M.Y. Mommaerts. This made the company renowned in Belgium and its neighbouring countries.

Quality is our top priority: we only work with certified suppliers for all our materials.

Our high-precision machines and the expertise of our production team assures that these quality standards are guaranteed in our assembly process.

The same quality requirements are continued in the relationship with our partners and customer service.

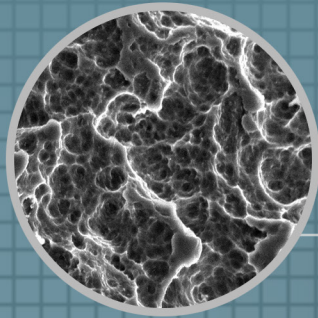
Personal contact is one of the core values of Surgi-Tec.

Our innovation and know-how have led to a very extensive OEM and subcontracting business.

Your idea is our common project!

SURGI-TEC NV BELGIUM
POORTAKKERSTRAAT 43-9051 SINT-DENIJS-WESTREM
PHONE: +32 (0)9 230 05 69
WWW.SURGI-TEC.COM - INFO@SURGI-TEC.COM

OSTEOSYNTHESIS PLATES



SLA: SAND
BLASTED &
ACID ETCHED

0.6 mm PLATE THICKNESS

UNIQUE SLOT DESIGN
ALLOWS FINE ADJUSTMENT

Ø 2.4 mm

5.4 mm MOVABLE SLOTS

Ø 1.4 mm

SEMI-RIGID TITANIUM GRADE I
ROUGH SURFACE PREVENTS SLIPPING AND ALLOWS
FOR FASTER HEALING

NO SHARP EDGES

Ø 2.4 mm

EXTRA LOCKING
AFTER PERFECT PLACEMENT

SURGI-TEC 








THE ART OF MOVING BONE



SURGI-TEC OSTEOSYNTHESIS PLATES

OSP

TITANIUM GRADE I

	REF.	DESCRIPTION	TOTAL HEIGHT
	60-001S	SLOT PLATE - SLA - DIAMOND	17.60 mm
	60-003S	SLOT PLATE - SLA - RUBY	21.05 mm
	60-004S	SLOT PLATE - SLA - EMERALD	26.05 mm
	60-005S	SLOT PLATE - SLA - TOPAZ	24.00 mm
	60-006S	SLOT PLATE - SLA - AMETHYST	30.00 mm
	60-007S	SLOT PLATE - SLA - GENIOPLASTY - OPAL	14.60 mm
	60-008S	SLOT PLATE - SLA - GENIOPLASTY - ONYX	18.10 mm



SURGI-TEC OSTEOSYNTHESIS PLATES

INSTRUMENTS

OSP

TO USE WITH 1.8 mm, 2.0 mm, 2.3 mm & 2.5 mm SCREWS

	REF.	DESCRIPTION
	99-901A	HANDPIECE FOR ALL INSERTS
	99-909S	INSERT - INTERNAL PENTAGON
	99-910S	INSERT - EXTERNAL PENTAGON
	99-101A	SCREWDRIVER INTERNAL PENTAGON
	99-915S	INSERT - SLOTTED

TO USE WITH 1.2 mm & 1.4 mm MICRO SCREWS

	99-901A	HANDPIECE FOR ALL INSERTS
	99-906S	INSERT - MICRO INTERNAL PENTAGON
	99-906A	SCREWDRIVER - MICRO INTERNAL PENTAGON
	99-907A	SCREWDRIVER - MICRO EXTERNAL PENTAGON



DRILLS CAN BE FOUND ON PAGE 33 OF THE CATALOGUE

SCREWS TO USE WITH OSP

SELF-TAPPING



REF.	DIMENSIONS	HEAD TYPE
70-105S	Ø 2.3 mm - LENGTH 5 mm	ROUND/SLOT
70-107S	Ø 2.3 mm - LENGTH 7 mm	ROUND/SLOT



70-805S	Ø 2.3 mm - LENGTH 5 mm	PENTAGON
---------	------------------------	----------



70-807S	Ø 2.3 mm - LENGTH 7 mm	PENTAGON
---------	------------------------	----------



70-809S	Ø 2.3 mm - LENGTH 9 mm	PENTAGON
---------	------------------------	----------



70-811S	Ø 2.3 mm - LENGTH 11 mm	PENTAGON
---------	-------------------------	----------



70-813S	Ø 2.3 mm - LENGTH 13 mm	PENTAGON
---------	-------------------------	----------



70-815S	Ø 2.3 mm - LENGTH 15 mm	PENTAGON
---------	-------------------------	----------



70-817S	Ø 2.3 mm - LENGTH 17 mm	PENTAGON
---------	-------------------------	----------



70-819S	Ø 2.3 mm - LENGTH 19 mm	PENTAGON
---------	-------------------------	----------

MICRO SCREW



71-205S	Ø 1.2 mm - LENGTH 5 mm	PENTAGON
---------	------------------------	----------



71-207S	Ø 1.2 mm - LENGTH 7 mm	PENTAGON
---------	------------------------	----------

RESCUE SCREW



70-905S	Ø 2.5 mm - LENGTH 5 mm	PENTAGON
---------	------------------------	----------



70-907S	Ø 2.5 mm - LENGTH 7 mm	PENTAGON
---------	------------------------	----------



All Surgi-Tec screws are available in single packed and 5-pack format. These containers are developed to fit in our sets and are colour marked. All critical information is clearly visible on top of the containers. The batch numbers are visible from the sides.

If you prefer to receive our screws in 5-packed format, please add .5 to the reference. e.g.: 70-205S in 5-pack becomes 70-205S.5

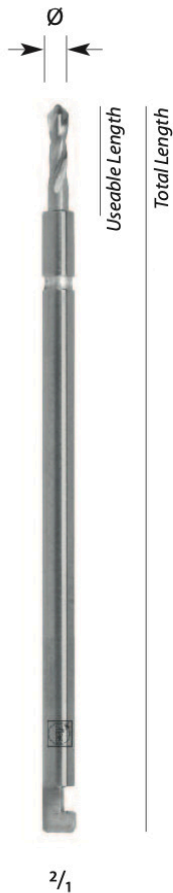


SURGI-TEC OSTEOSYNTHESIS DRILLS

DRILLS

CUSTOMIZED FOR SURGI-TEC PRODUCTS

2 cutting edges
stainless steel



REF.	DIAMETER	USABLE LENGTH	TOTAL LENGTH
46050/07/010	1.00 mm	7 mm	50 mm
46083/22/010	1.00 mm	22 mm	83 mm
46050/15/012	1.20 mm	15 mm	50 mm
46050/07/0165	1.65 mm	7 mm	50 mm
46098/20/0165	1.65 mm	20 mm	98 mm
46050/07/018	1.80 mm	7 mm	50 mm
46098/25/018	1.80 mm	25 mm	98 mm

SURGI-TEC'S COLOUR CODING

Ø 1.00 mm	RED	1 RING	FOR Ø 1.2 mm SCREWS
Ø 1.20 mm	RED	2 RINGS	FOR DRILLING A GLIDING HOLE Ø 1.2 mm SCREWS (LAG SCREW)
Ø 1.65 mm	BLUE	1 RING	FOR Ø 2.3 mm SCREWS IN THE MAXILLA
Ø 1.80 mm	BROWN	1 RING	FOR Ø 2.3 mm SCREWS IN THE MANDIBLE

i Surgi-tec Recommends the following Ødrills for its different screws:
 Ø1mm drills: are commonly used with the micro screws (Ø1.2mm)
 Ø1.65mm drills: are recommended with Ø2.3mm screws in the Maxilla
 where Ø1.8mm drills are recommended with Ø2.3mm screws in the Mandible.
 We offer slight deviations on these recommended drills to suit all.

Note: we trust the surgeon's knowledge to choose a suitable drill size.

A photograph of a modern industrial building with a corrugated metal facade. A dark blue sign with the 'SURGI-TEC' logo is mounted on the wall. In the foreground, there is a dense green hedge. The sky is blue with white clouds. A large teal triangle is on the left side of the image.

SURGI-TEC

THE ART OF MOVING BONE



WWW.SURGI-TEC.COM

ALL RIGHTS RESERVED TO SURGI-TEC NV



MedTech
Flanders



University
of Leuven



CADskills



Flanders



Flanders